



THE ATRIUM, SW1P

£3,450 PER MONTH

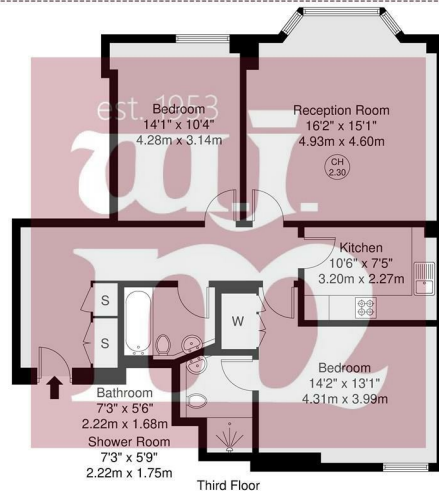
- Heart of Pimlico
- Concierge/ Porter Service
- Two Bathrooms
- Private Gym
- Underground Parking
- Available early August





The Atrium, Vincent Square, SW1P

GROSS INTERNAL AREA  
83.2 sq m / 895 sq ft



GROSS INTERNAL AREA (GIA)  
The largest of the building  
83.2 sq m / 895 sq ft

TOTAL STORAGE SPACE  
Storage room, wardrobe, etc.  
2.4 sq m / 25 sq ft

EXTERNAL STRUCTURAL FEATURES  
Columns, Beams, Partitions, etc.  
0.0 sq m / 0.0 sq ft

RESTRICTED HEAD HEIGHT  
Ceiling or other building part  
0.0sq m / 0.0 sq ft

Disclaimer : Floorplan measurements are approximate and are for illustrative purposes only. While we do not doubt the floorplan accuracy and completeness, you or your advisors should conduct a careful, independent investigation of the property in respect of monetary valuation.

Maison  
VUE

W J Meade are pleased to present this large two double bedroom apartment to rent in The Atrium, Vincent Square, Pimlico. Situated on the third floor of this stylish block, the apartment comprises a bay fronted living room with both living and dining furniture, fully fitted kitchen, two double bedrooms and two bathrooms (one being en-suite). Residents benefit from exclusive access to a well-equipped gym, and live in porter/ concierge and underground parking. Located in the heart of Westminster, this flat is within walking distance of Pimlico and St. James's Park tube stations, making commuting effortless. The area boasts a variety of restaurants, coffee shops, and supermarkets, catering to all your daily needs.

Deposit is 5 week's rent.

Service charge £n/a

Ground rent £n/a

Reserve fund £n/a

n/a years lease

Council tax band G

Current EPC Rating 77

Tenure:



All sizes are approximate. The Agent has not tested any apparatus, equipment, fixtures and fittings, or services and so cannot verify that they are in working order or fit for the purpose. A buyer is advised to obtain verification from their Solicitors or Surveyor. Photographs are for illustration purposes only and may depict items, which are not for sale or included in the sale price. References to tenure of a property are based upon information supplied by the vendor. The agent has not had sight of the title documents, a buyer is advised to obtain verification from their solicitor. Money Laundering Regulations 2003: Intending purchasers will be asked to produce identification, documentation at a later stage and we would ask for your co-operation in order that there will be no delay in agreeing the sale.

These particulars are intended to give a fair description of the property only and are in no way guaranteed, nor do any contract. They are issued on the express condition that all negotiations are conducted through W.J. Meade Estate Agents. All subject to contract and to being unsold.